



la Convention  
de la Baie James  
et du Nord québécois

Comité d'examen des répercussions  
sur l'environnement et le milieu social

Environmental and Social Impact  
Review Committee

ᑲᑦᑎᑦᑎᑦᑎᑦᑎᑦᑎᑦ ᑕᑦ ᑎᑦᑎᑦ  
ᑕᑦᑎᑦᑎᑦᑎᑦᑎᑦ  
ᑕᑦᑎᑦ

# 2024–2025 *Annual Report*



September 24, 2025

Cover photo: Lac aux Dorés and Lac Chibougamau, Chibougamau, Québec, <https://greibj-eijbrg.ca/>

Last page: Lac Champion, Nemaska, Québec

**Frédéric Guay**

Deputy Minister and Provincial Administrator for Section 22  
of the James Bay and Northern Québec Agreement

Ministère de l'Environnement, de la Lutte contre les changements climatiques,  
de la Faune et des Parcs

**Nadia Saganash**

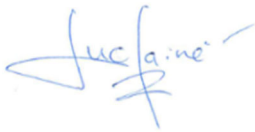
Regional Administrator for Section 22  
of the James Bay and Northern Québec Agreement (Interim)

Cree Nation Government

Dear Sir, Dear Madam:

On behalf of myself and the members of the Environmental and Social Impact Review  
Committee (COMEX), I am pleased to send you the report of activities for the year ended  
March 31, 2025.

Yours sincerely,



**Luc Lainé**

Chair

Environmental and Social Impact Review Committee

## Message from the Chair

Producing an annual report is a wonderful occasion to impartially and objectively measure and assess the quantity and quality of our work over the past year. It is also the perfect occasion to plan future projects that align with our mission.

In May 2025, Bill 81 (*Loi modifiant diverses dispositions en matière d'environnement*) was passed by the National Assembly. Although it applies only in southern Québec, I mention this new legislation because its goal is to make their environmental impact assessment and review process more effective and efficient.

This is a goal COMEX shares, while continuing to respect the obligations set out in the James Bay and Northern Québec Agreement. This Act sheds light on certain approaches and practices, including the protection and restoration of wetlands and bodies of water, the exclusive use of renewable energy and a heightened sensitivity to regional realities.

Although November 11, 2025, will mark the 50th anniversary of the signing of the James Bay Agreement, it is important to note that COMEX will need to redouble its efforts to encourage project proponents to submit complete impact studies and provide clear answers to the questions asked of them. Such discipline would accelerate the process, benefiting of all parties. As you will read in our annual report, our team and its partners have developed a series of measures that should yield results in the medium term.

Throughout the year, COMEX held multiple meetings. I invite anyone interested to visit the COMEX website (<https://comexqc.ca>). It contains a wealth of information about our activities, meeting minutes, the recommendations made by COMEX, and much more.

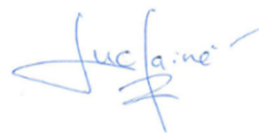
On behalf of my colleagues, I would like to thank the Deputy Minister and Provincial

Administrator for Section 22, Marie-Josée Lizotte, for her support of our work. We wish her a happy retirement and extend our congratulations to Frédéric Guay on his appointment.

In closing, I would like to thank my fellow members Daniel Berrouard and Robert Joly, appointed by the Québec government, and John Paul Murdoch and Lucas Del Vecchio, appointed by the Cree Nation Government, as well as our Executive secretary, Sophie Cooper, PhD (Water Science). Also, I would also be remiss not to highlight the excellent work and professionalism of the Québec and Cree Nation government analysts, whose contributions have greatly enriched our collective reflection and helped us make informed recommendations.

I wish you an inspiring read!

O nenh



**Luc Lainé**

Chair

Environmental and Social Impact Review  
Committee

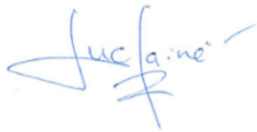
## *Chairman's Statement*

To the best of my knowledge, the 2024–2025 annual report:

- accurately describes the Review Committee's mission, areas of activity, strategic directions and priorities;
- provides accurate and reliable data covering all Review Committee's activities and indicates the degree of achievement of its objectives.

In accordance with its mandate, throughout the fiscal year, the Review Committee maintained a system for sharing information with the MELCCFP to ensure sound management of its operations and accountability for the undertakings ensuing from its strategic directions and its objectives for 2024-2025.

I am satisfied with the practices and methods used to produce the information contained in this annual report of activities.



**Luc Lainé**

Chair  
Environmental and Social Impact Review  
Committee

## *List of Acronyms*

<b>AQÉI</b>	<b>Association québécoise pour l'évaluation d'impact</b>
<b>CA</b>	<b>Certificate of authorization</b>
<b>CNG</b>	<b>Cree Nation Government</b>
<b>COFEX-Sud</b>	<b>Federal Review Panel-South</b>
<b>COMEX</b>	<b>Environmental and Social Impact Review Committee</b>
<b>EIJBRG</b>	<b>Eeyou Istchee James Bay Regional Government</b>
<b>EQA</b>	<b>Environment Quality Act</b>
<b>JBNQA</b>	<b>James Bay and Northern Québec Agreement</b>
<b>MELCCFP</b>	<b>Ministère de l'Environnement, de la Lutte contre les changements climatiques, de la Faune et des Parcs</b>
<b>MRNF</b>	<b>Ministère des Ressources naturelles et des Forêts</b>
<b>MTMD</b>	<b>Ministère des Transports et de la Mobilité durable</b>
<b>PÉEIE</b>	<b>Procédure d'évaluation et d'examen des impacts sur l'environnement</b>
<b>PGIRE</b>	<b>Plan de gestion intégrée des ressources énergétiques</b>
<b>REE</b>	<b>Registre des évaluations environnementales</b>
<b>SDBJ</b>	<b>Société de développement de la Baie James</b>

## *Table of contents*

### *About the Review Committee*

7	Mission
7	Mandate
8	Territory covered by the Review Committee's mandate
9	Composition of the Review Committee
10	Ethics and professional conduct
10	COMEX recommendations
11	Public participation in the Review Committee's work

### *Current issues for COMEX*

12	Environmental and social impact assessment
13	Energy requirement planning
14	Cumulative impact of transportation

### *Communications, meetings and projects*

16	Communications
16	COMEX meetings
17	Projects that were the subject of a full review, a modification or monitoring
19	Project submitted to public hearings

### *Resources*

20	Human and material resources
21	Finances

# *About the Review Committee*

## **Mission**

The Environmental and Social Impact Review Committee (Review Committee – COMEX) is an independent body reporting to the Minister of the Environment, the Fight Against Climate Change, Wildlife and Parks (MELCCFP). Its mission is to contribute to the protection of human health and the environment and to the economic and social well-being of the peoples inhabiting the territory south of the 55<sup>th</sup> parallel governed by the *James Bay and Northern Québec Agreement* (JBNQA).

## **Mandate**

The Review Committee was established by Section 22 of the JBNQA and Title II of the *Environment Quality Act* (EQA). Its mandate is to review development projects submitted to the environmental and social impact assessment and review procedure, and to recommend to the Provincial Administrator or the Cree Regional Administrator whether or not the project should be authorized and under what conditions. Where necessary, the Review Committee recommends the conditions under which a project can be carried out, specifying, as needed, appropriate preventive or remedial measures.

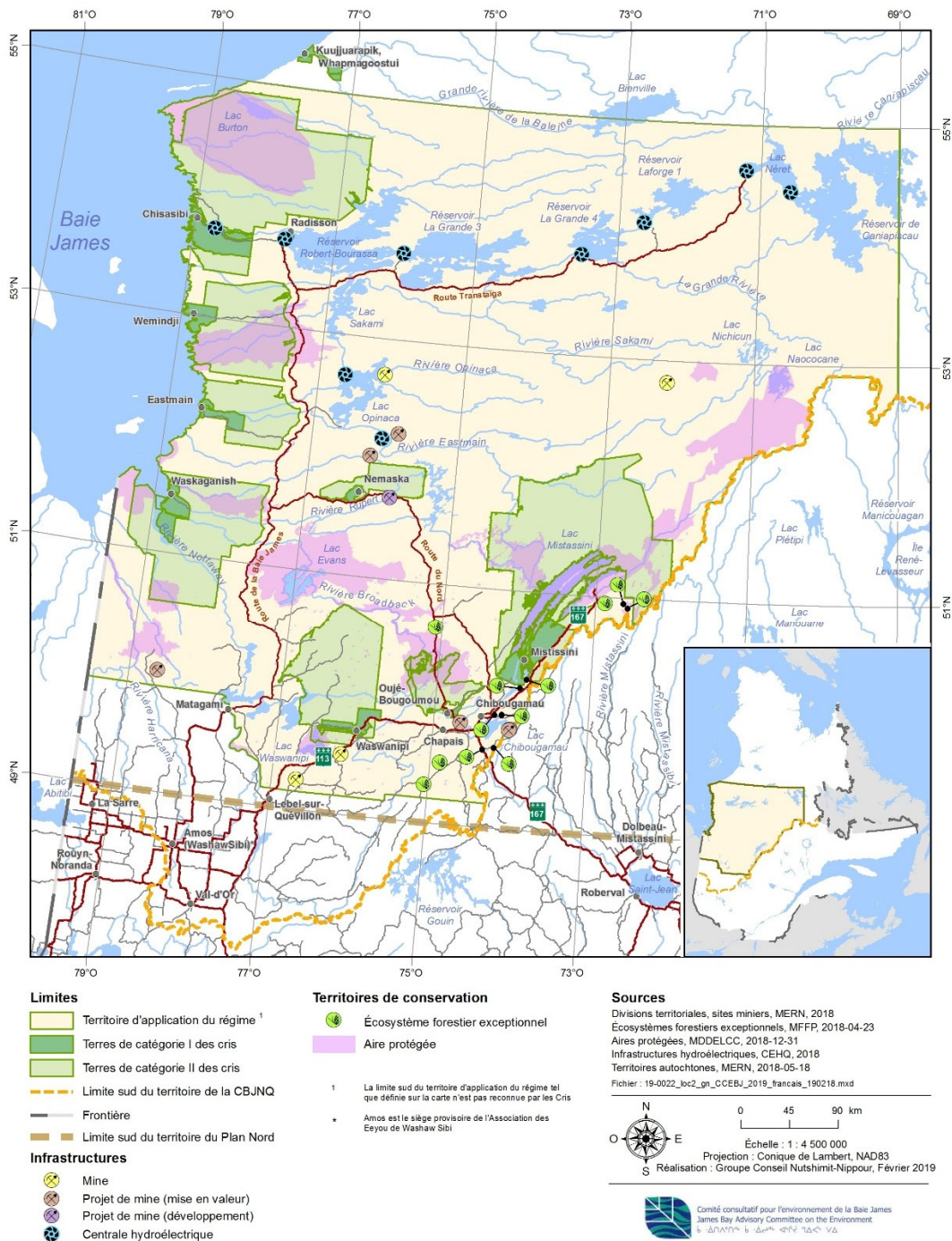
Accordingly, COMEX examines every project subject to the environmental and social impact assessment and review procedure, using the relevant expertise of the Québec and Cree Nation governments. The participation of affected communities, as well as that of other interested individuals and groups, plays an important role in COMEX's approach, allowing the Review Committee to identify the concerns of people living in the territory and, in particular, take into account the traditional knowledge held by Indigenous communities.

In keeping with the principles set out in paragraph 22.2.4 of the JBNQA, the Review Committee gives due consideration to the following:

- ⊕ the protection of Cree citizens' hunting, fishing and trapping rights;
- ⊕ the environmental and social protection regime;
- ⊕ the protection of the Cree people, societies, communities and economies;
- ⊕ the protection of wildlife resources, the physical and biological environments and ecological systems;
- ⊕ the Cree people's rights and guarantees within Category II lands;
- ⊕ the involvement of the Cree people in the application of the environmental and social protection regime;
- ⊕ the rights and interests of non-Indigenous people, whatever they may be;
- ⊕ the right to develop by people acting lawfully in the territory;
- ⊕ the minimizing of negative environmental and social impacts of development on the Cree people and communities by reasonable means, with special reference to those measures proposed or recommended by the impact assessment and review procedure.

## Territory covered by the Review Committee's mandate

The Review Committee's mandate covers the territory south of the 55<sup>th</sup> parallel of latitude and west of the 69<sup>th</sup> meridian of longitude, as defined in Section 22 of the JBNQA, and including the Category I and II lands of Whapmagoostui, a Cree community just north of the 55<sup>th</sup> parallel. The land regime established by the JBNQA divides the lands into three categories. Category I lands are reserved for the exclusive use of Cree citizens and include the lands located in and around their communities. Category II lands are public lands where Cree citizens have exclusive hunting, fishing and trapping rights. Category III lands are public lands where Cree citizens have the right to hunt, fish and trap at any time without a licence or permit and without a bag or catch limit, subject to the principle of conservation.



## Composition of the Review Committee

The Review Committee and its composition were established by paragraphs 22.6.1 and 22.6.2 of the JBNQA.

“An Environmental and Social Impact Review Committee (hereinafter referred to as ‘the Review Committee’) is established which shall be the review body respecting development projects in the Territory involving provincial jurisdiction.

“The Review Committee shall have five (5) members. Québec shall appoint three (3) members and the Cree Regional Authority [now the Cree Nation Government] shall appoint two (2) members. The Chairman shall be appointed by the Lieutenant Governor in Council from among the members appointed by the Provincial Government. The remuneration of a member and his expenses shall be paid for by the body that appoints such a member. However, the expenses of the Cree representatives shall be part of the costs of the secretariat.”

The members of COMEX in 2024–2025 were:

### Members appointed by the Québec government

Luc Lainé, Chair  
Daniel Berrouard  
Robert Joly

### Members appointed by the Cree Nation Government

John Paul Murdoch  
Lucas Del Vecchio



Luc Lainé



Daniel Berrouard



Robert Joly



John Paul Murdoch



Lucas Del Vecchio

## Ethics and professional conduct

COMEX is a public body. As such, its members are deemed to be public office holders within the meaning of the *Public Administration Act*. In the performance of their duties, members are required to respect the ethical principles and the rules of professional conduct set out in the [Regulation respecting the ethics and professional conduct of public office holders](#), as well as the code of ethics and professional conduct adopted by COMEX. In case of discrepancy between the texts, the more stringent rules and principles apply. The [Déclaration de valeurs de l'administration publique québécoise](#) also guides members in the performance of their duties.

The Review Committee's code of ethics, signed by every member, is available on the COMEX website at the following address: <https://comexqc.ca/en/a-propos/ethique-deontologie/>

## COMEX recommendations

The JBNQA provides for three administrators for development projects submitted to impact assessment and review: one for matters respecting provincial jurisdiction, one appointed by the Cree Nation Government for proposed development on Category I lands, and one for matters respecting federal jurisdiction. Projects involving federal jurisdiction are submitted to the Federal Review Panel (COFEX-South).

After reviewing a project submitted for its consultation and comments, COMEX forwards its recommendations to the appropriate responsible Administrator under Section 22 of the JBNQA. It is up to the Administrator to decide whether or not to authorize a project and, if so, under what conditions. If the Administrator is unwilling or unable to accept any recommendation of the Review Committee or wishes to modify such recommendations, they must consult with the Review Committee to explain their position (para. 22.6.17, JBNQA).

For the 2024–2025 fiscal year ending on March 31, 2025, the Provincial Administrator designated by the Québec government was Marie-Josée Lizotte, Deputy Minister of the MELCCFP. For the Cree Nation Government, the designated Regional Administrator was Isaac Voyageur, Director, Environment and Remedial Works Department, Cree Nation Government.

## Public participation in the Review Committee's work

COMEX has adopted a directive on public participation that is available on its website at the following address:

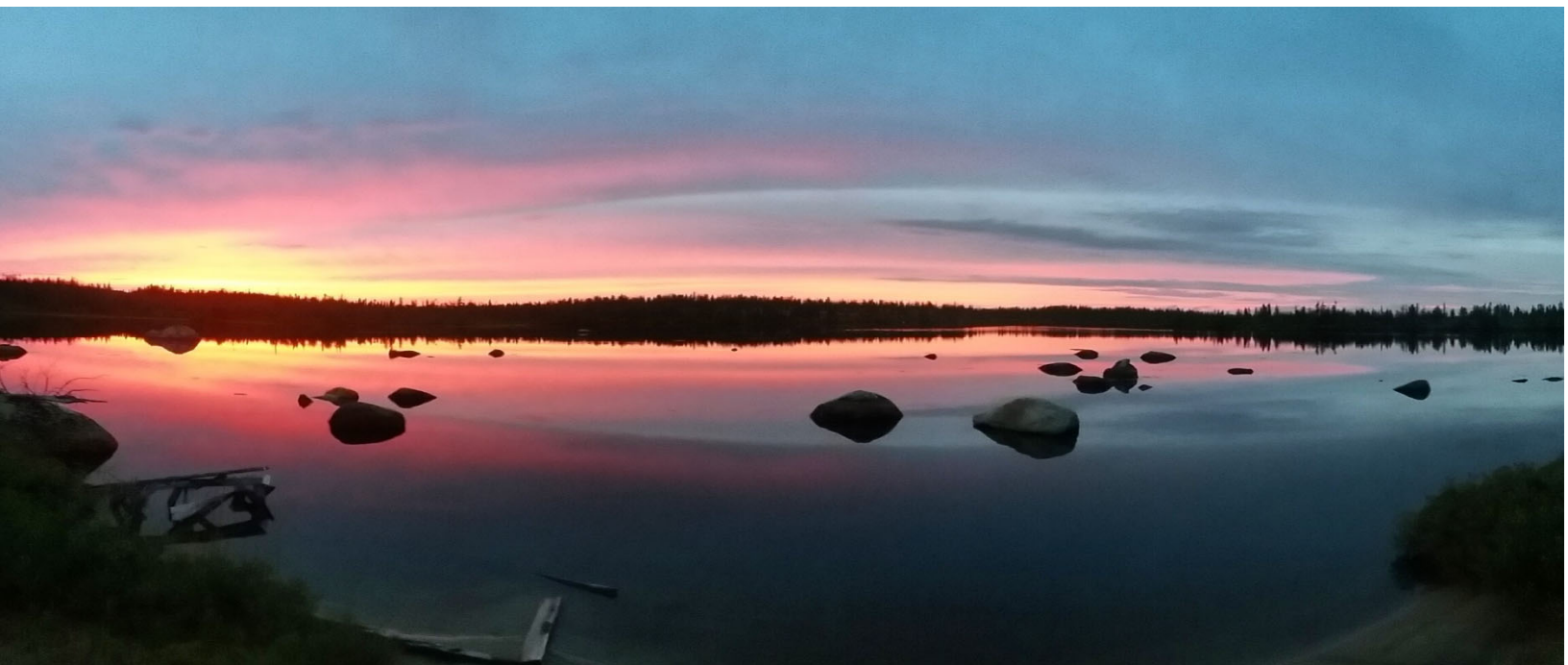
<https://comexqc.ca/en/participation-publique/information-generale/>

COMEX's concept of public participation hinges on three elements: information, consultation and public hearings. First, project-related information made available to the public must be complete and accessible. This is the bedrock of any public participation process. In COMEX's case, this means not only making publicly available all information related to its mandate, procedures and working methods, but also providing information about projects that are under review or have completed the review process. Accordingly, all of this information is posted on the COMEX website.

Second, at the consultation stage, COMEX seeks views and opinions on the projects under review. As soon as a project is announced on the COMEX website as being

“under review,” and throughout the review process, any interested party may submit their comments and opinions via the website. Written comments may also be submitted to the COMEX secretariat by mail or email.

Finally, the public hearing process consists of an information and consultation session, held in a community at a designated time, to gather comments and opinions on a given project or on any planned changes to a project. The consultation stage is an opportunity for discussions among the public, the project proponent and COMEX members. All COMEX hearings are public. In accordance with the directive on public participation, “The Review Committee determines whether a public hearing is needed after taking into account the social and environmental impacts of a project, initiatives undertaken by the proponent, and the comments and concerns it hears during the consultation process.”



## *Current issues for COMEX*

Over the past year, COMEX has continued to reflect on how to optimize the environmental and social assessment and review procedure in northern territories. It has also invited agencies of the Québec government and the Cree Nation Government to participate in discussions on the cumulative impact of road transport on the Eeyou Istchee James Bay territory.

### **Environmental and social impact assessment**

Like the MELCCFP for projects located in southern Québec, COMEX has noted a persistent lack of understanding among some project proponents of the environmental and social impact assessment procedure applicable to projects located in the Eeyou Istchee James Bay region (northern procedure). This confusion concerns the steps of the review process, expected documentation, and the time required to complete a full project review.

On May 28, 2025, the Québec National Assembly adopted Bill 81 (*Loi modifiant diverses dispositions en matière d'environnement*). The omnibus bill aims to modernize and simplify several environmental procedures. One of the central objectives of this reform is to make the environmental impact assessment and review procedure (PÉEIE - procédure d'évaluation et d'examen des impacts sur l'environnement) more efficient, agile, transparent and focused on priority issues.

The real question is the following: how can optimizing the PÉEIE help encourage project proponents and initiators to submit complete impact studies, or motivate them to provide adequate, thoughtful responses to the questions and comments they receive?

It is essential to avoid making major changes to a project, which are often the result of inadequate preparation. It is also important to avoid the need for major

adjustments once a project has been approved.

COMEX would like to remind proponents that any significant delay—whether during the review process or between project approval and implementation—can lead to disappointment and cynicism among the communities concerned, as well as suspicion due to a lack of transparency.

In short, this bill marks an important step in the modernization of Québec's environmental framework. It aims to reconcile sustainable development, administrative efficiency and better protection of biodiversity while taking regional realities into account.

However, it is important to note that the bill **does not apply** to environmental assessment systems for projects governed by the James Bay and Northern Québec Agreement (JBNQA).

It will therefore be necessary to consider the impact of southern Québec on not only the culture of proponents, but also that of environmental assessment consultants, as well as the ways in which COMEX and the MELCCFP review projects. Until these changes are fully adopted, the MELCCFP and COMEX will continue to receive incomplete additional information, observe non-compliance with the requirements of impact study directives, and experience significant delays in the project review process.

## **Possible solutions**

Several strategies can be implemented to clarify the northern environmental assessment procedure for proponents and consultants. It is essential that they clearly understand the requirements of Section 22 of the JBNQA. This requires transparent communication regarding expected timeframes, the possibility of holding public hearings, the expectations of COMEX and the MELCCFP, and the responsibilities of proponents. It is also important to identify common project review issues early on to prevent them.

One strategy already in place relies on the use of open web portals, such as the MELCCFP's Registre des évaluations environnementales (REE) or the COMEX website. These platforms make the documents submitted by proponents available to the public and provide regular status updates on projects. However, COMEX has noted that these sites are rarely consulted or used by proponents and their consultants. To encourage greater use, these tools could be enhanced by the addition of interactive visuals to simplify the results of impact studies. Another approach is to use science storytelling, linking technical data to concrete issues affecting the communities concerned.

Particular attention must be paid to addressing the concerns of Cree communities and local governments. To ensure a respectful, transparent and efficient process, proponent-led consultations must begin at the earliest stages of the project. It is recommended that they create dialogue circles and participatory workshops to integrate traditional knowledge. Proponents could also receive training in cultural sensitivity and active listening.

Finally, we need to demystify the environmental impact assessment process by making regulations and scientific data easier to understand. This could take the form of online training modules for citizens

and stakeholders, interactive glossaries explaining technical terms, or scenario simulations illustrating the potential effects of projects.

Implementing one or more of these approaches would make the information clearer, more engaging and more useful for the citizens and communities concerned.

## **Energy requirement planning**

COMEX has observed a worrying trend in recently submitted mining projects: insufficient energy requirement planning during the early design stages.

Ideally, the environmental impact study should include an assessment of the possibility of supplying the entire mine site with electricity from the Hydro-Québec grid. A mine's energy needs generally require a transmission line of over 75 kV, which involves building a transformer substation of 75 kV or more, and a line subject to an environmental impact assessment, in accordance with Schedule A of the *Environment Quality Act* (EQA).

Such a study would normally be the responsibility of Hydro-Québec, the network owner. However, several proponents report that Hydro-Québec estimates a timeline of four years to obtain the necessary authorizations and build the necessary infrastructure. According to COMEX, these long delays are mainly associated with 735 kV high-voltage lines and substations. By comparison, a connection to a 69 kV line, which is exempt from the procedure, is often preferred by proponents to speed up preliminary studies and authorization procedures.

However, this solution often proves insufficient to meet the actual energy needs of the mine site. To meet the energy needs of fixed infrastructure, many proponents are turning to alternative energy sources, such as propane gas,

which is considered easier to supply than liquefied natural gas.

In many cases, however, Hydro-Québec could have supplied the power to meet 100% of the project's needs. The use of propane is therefore a suboptimal solution, both environmentally and strategically.

It is imperative that proponents reassess the possibility of powering their mine sites entirely by renewable energy sources that are complementary to hydroelectricity, such as wind, solar or geothermal. This transition to a 100% renewable energy supply should be incorporated from the very beginning of the planning phase to guarantee the energy viability and social acceptability of the projects.

### **Bill 69: developing energy resources**

To improve the planning and allocation of energy resources, the Ministère de l'Économie, de l'Innovation et de l'Énergie introduced Bill 69, which was passed on June 7, 2025. This legislation aims to ensure that energy resources are governed responsibly and to modernize the legislative and regulatory framework that has been in force for nearly 30 years. It is part of a drive to accelerate Québec's energy transition and contribute to its decarbonization.

Among other things, the new provisions of the Act aim to:

- accelerate the development of wind power projects;
- increase investment in power lines;
- improve the predictability and transparency of energy supply planning.

One of the central elements of this reform is the implementation of the *Plan de gestion intégrée des ressources énergétiques* (PGIRE). Developed by the Ministère in collaboration with Hydro-Québec and other distributors, the plan aims to coordinate energy supply, production and consumption. It is

expected to provide greater predictability in the energy sector and promote a coherent and equitable transition.

It remains to be seen whether this modernization of energy governance will enable proponents of mining projects in Eeyou Istchee James Bay to better plan their energy needs. This could also encourage them to integrate more renewable energy sources, recognizing that such approaches could enhance the environmental and social integration of projects.

### **Cumulative impact of transportation**

The cumulative impact of transportation in the Eeyou Istchee James Bay region remains a major concern for COMEX. This topic is regularly raised as a priority by Cree communities during public consultations.

Several issues linger, notably the management and maintenance of the Billy-Diamond Highway. Questions remain regarding the Highway's carrying capacity, the amount of required surveillance, the applicable regulations and coordination between the various authorities responsible. As this road does not fall under the jurisdiction of the Ministère des Transports et de la Mobilité durable (MTMD), there are significant shortcomings.

COMEX is concerned about the capacity of roads in the Eeyou Istchee James Bay region to support the planned transportation while ensuring sustainable development and harmonious use of these infrastructures. COMEX recognizes that the issue of the cumulative impact of transportation is not the responsibility of a single proponent, but involves all stakeholders. Responsibility for these roads, from maintenance to traffic enforcement, is also shared by multiple stakeholders.

COMEX has noted that proponents continue to underestimate the cumulative impact of transportation in mining projects. They still struggle to clearly define their transportation plan and assess its impact. However, some have initiated discussions with the Société de développement de la Baie-James (SDBJ) on road safety and maintenance, including signed management agreements with the organization.

COMEX would like the Québec government to set up a regional coordination mechanism involving the MELCCFP, MRNF, SDBJ, EIJB RG and MTMD. This mechanism would assist stakeholders in regulating traffic on the territory's roads to promote safe and sustainable use for all users.

COMEX considers it essential to share information between stakeholders to improve the use, safety and maintenance of the Billy-Diamond Highway. It also wishes to be consulted to identify the concerns of the Cree communities and to make government agencies aware of the shortcomings observed in the region's road infrastructure.

Finally, COMEX plans to continue its discussions with the MELCCFP over the coming year, with the aim of developing an action plan to better account for the cumulative impact of transportation in the Eeyou Istchee James Bay region into account.



# *Communications, meetings and projects*

## **Communications**

### **Website**

COMEX updates its website on a weekly basis to post the latest news on projects submitted for its review. The main purpose is to ensure greater transparency and allow all interested parties to stay informed about a project or changes to a project and to allow them to consult the related documents. A continuous effort is made to show due diligence in providing the affected communities, where necessary, with project-related documents translated into English and Cree, in addition to French.

Between April 1, 2024, and March 31, 2025, 10,900 users visited the site. A total of 32,300 pages were viewed, the most popular being those dedicated to Galaxy Lithium (James Bay lithium mine), Dhilmar Éléonore (Éléonore mine) and Windfall Mining Group (Windfall mine) mining projects. The average session duration was 2 min 06 sec. That represents a roughly 12% decrease in visits to COMEX's website over the previous year. Numerous factors may have contributed to this decrease, such as the absence of public hearings by COMEX during 2024–2025.

### **Social media**

COMEX posts certain information on its Facebook/Meta and “X” accounts to reach a wider audience.



### **External communication and information channels**

COMEX is always on the lookout for external communication channels and forums for raising awareness and enabling a better understanding of the environmental and social impact assessment and review procedure.

## **COMEX MEETINGS**

In addition to sustained interaction during the year, COMEX members met once (1) in person and 9 times by videoconference (Teams) to discuss projects submitted to the environmental and social impact assessment and review procedure.

- ⊕ 424<sup>th</sup> meeting: April 24, 2024
- ⊕ 425<sup>th</sup> meeting: May 21, 2024
- ⊕ 426<sup>th</sup> meeting: June 14, 2024
- ⊕ 427<sup>th</sup> meeting: July 19, 2024
- ⊕ 428<sup>th</sup> meeting: September 24, 2024
- ⊕ 429<sup>th</sup> meeting: October 22, 2024
- ⊕ 430<sup>th</sup> meeting: November 27, 2024
- ⊕ 431<sup>st</sup> meeting: January 22, 2025
- ⊕ 432<sup>nd</sup> meeting: February 19, 2025
- ⊕ 433<sup>rd</sup> meeting: March 18, 2025



Several COMEX members took part in the annual conference of the Association québécoise pour l'évaluation d'impact (AQÉI), held in the city of Québec from November 18 to 20, 2024, on the theme of *Indigenous People and Environmental Assessment*. COMEX Chair Luc Lainé took part in a panel discussion entitled *Native Voices*, the aim of which was to discuss the notions of collaboration between governments and Indigenous communities, as well as the importance of incorporating Indigenous knowledge into environmental assessment procedures. (Photo: Sophie Cooper)

COMEX is proud to announce that Daniel Berrouard, a member designated by the Gouvernement du Québec, was presented with the "Career" award at the annual AQÉI gala. This prestigious award is presented to an AQÉI member in recognition of the excellence of their professional career. The winner is recognized by their peers as a leading figure within Québec's environmental assessment community. (Photo: AQÉI)

Congratulations to our colleague on this well-deserved award!



## PROJECTS THAT WERE THE SUBJECT OF A FULL REVIEW, A MODIFICATION OR MONITORING

Between April 1, 2024, and March 31, 2025, several decisions and recommendations were adopted and entered in the decisions register and the various meeting minutes, all of which are available on the COMEX website at <https://comexqc.ca/en/comex-documents/>.

### Transmittal of questions and comments

- ⊕ Eastmain-1-A hydroelectric project and Rupert diversion project
  - ⊕ Follow-up on conditions of the CA
- ⊕ Windfall mining project
  - ⊕ Environmental and social impact assessment
- ⊕ New landfill project in Nemaska
  - ⊕ Environmental and social impact assessment
- ⊕ James Bay lithium mine project
  - ⊕ Follow-up on conditions of the CA and application to amend the CA

- ⊕ Rose Lithium-Tantalum mining project
  - ⊕ Follow-up on conditions of the CA and application to amend the CA
- ⊕ Project to build a new trench landfill site in Wemindji
  - ⊕ Application to amend the CA
- ⊕ Project to restore Mine Principale in Chibougamau
  - ⊕ Follow-up on conditions of the CA
- ⊕ Whabouchi mining project
  - ⊕ Application to amend the CA
- ⊕ Great Whale River wind farm project in Whapmagoostui-Kuujuaraapik
  - ⊕ Follow-up on conditions of the CA
- ⊕ Éléonore mining project
  - ⊕ Application to amend the CA
- ⊕ Project to extend Route 167 North toward the Otish Mountains
  - ⊕ Follow-up on conditions of the CA

### **Recommendations**

- ⊕ Rose Lithium-Tantalum mining project, Critical Elements Lithium Corporation
  - ⊕ Application to amend the CA
- ⊕ James Bay lithium mine project, Galaxy Lithium Inc.
  - ⊕ Follow-up on conditions of the CA
- ⊕ Dewatering of the J-4 and 87 pits on the former Troilus mine site, Troilus Gold Corp.
  - ⊕ Application to amend the CA
- ⊕ Éléonore mining project, Goldcorp Canada Ltd
  - ⊕ Application to amend the CA
- ⊕ Whabouchi mining project, Nemaska Lithium
  - ⊕ Application to amend the CA
- ⊕ Great Whale River wind farm project in Whapmagoostui-Kuujuaraapik, KWREC
  - ⊕ Follow-up on conditions of the CA
- ⊕ Waswanipi domestic waste landfill project
  - ⊕ Follow-up on conditions of the CA
- ⊕ New trench landfill project in Wemindji, Cree Nation of Wemindji
  - ⊕ Application to amend the CA
- ⊕ Project to extend Route 167 North toward the Otish Mountains
  - ⊕ Follow-up on conditions of the CA

### **Follow-up of conditions, annual and/or other monitoring**

- ⊕ Eastmain-1-A hydroelectric project and Rupert River diversion project
  - ⊕ COMEX examined 13 follow-up reports on the conditions of the certificate of authorization (CA), including riparian and aquatic vegetation, fish population dynamics in the Rupert River and its diversion bays, lake sturgeon and lake trout spawning grounds, and mercury levels in fish flesh. For more information on the Review Committee's recommendations for each of these monitoring reports, see the meeting minutes at [comexqc.ca/en/comex-documents/](http://comexqc.ca/en/comex-documents/).

- ⊕ James Bay lithium mine project
  - ⊕ Follow-up on conditions of the CA
- ⊕ Rose Lithium-Tantalum mining project
  - ⊕ Follow-up on conditions of the CA
- ⊕ Dewatering of the J-4 and 87 pits on the former Troilus mine site
  - ⊕ Environmental monitoring program
- ⊕ Waswanipi domestic waste landfill project
  - ⊕ Follow-up on conditions of the CA

## **PROJECT SUBMITTED TO PUBLIC HEARINGS**

The Review Committee did not hold any public consultations in 2024–2025.

## *Resources*

### **Human and material resources**

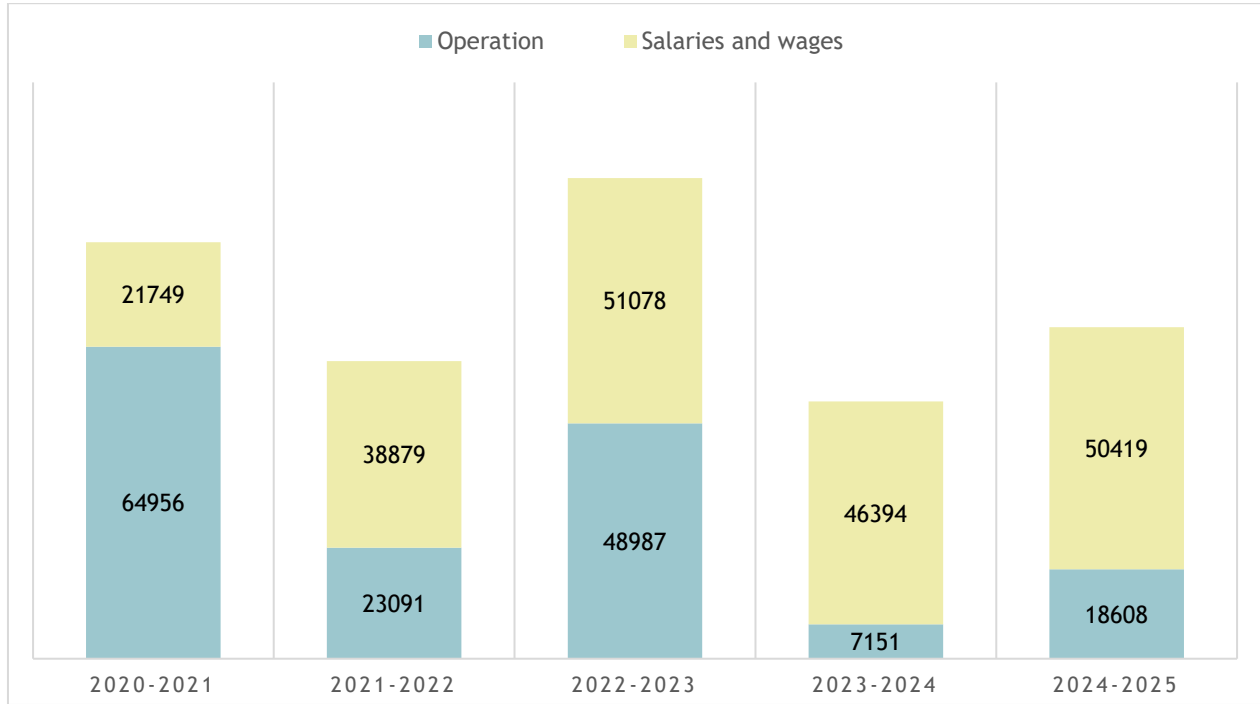
The JBNQA stipulates that the Review Committee “shall be provided with an adequate staff to fulfil its functions and such staff shall be maintained and funded by Québec” (para. 22.6.3). Accordingly, the Ministère de l’Environnement, de la Lutte contre les changements climatiques, de la Faune et des Parcs handles the operations and associated costs of the Review Committee’s secretariat. It also appoints some of its employees to assist in the analysis of projects reviewed by COMEX.

The secretariat is headquartered in the city of Québec and has its office at the MELCCFP. The executive secretary manages the official documents of the Review Committee, sees to the organization of meetings and writes up the minutes. She also follows up on official correspondence and is the COMEX administrative contact person. The executive secretary is also charged with updating COMEX’s website. The position of executive secretary is currently held by Sophie Cooper.

The Cree Nation Government (CNG) maintains its own environmental and social assessment secretariat. In consultation with the executive secretary of COMEX, the CNG secretary follows up on official correspondence and is the administrative contact person for the Regional Administrator, the CNG-appointed members of COMEX and CNG project analysts. The CNG secretary also stays in close, constant contact with members of the Cree communities. In 2024–2025, the position was held by Graeme Morin.

## Finances

As stipulated in paragraph 22.6.3 of the JBNQA, the Review Committee is provided with an adequate staff to fulfil its functions and such staff is maintained and funded by the province of Québec, “subject to the approval of budget for same.” The following chart shows the expenditures incurred by the Review Committee in recent years:



Total expenditures funded by the Québec government.  
Expenditures paid by the Cree Nation Government are not shown.

